

Compact low power telemetry, data-logging and alarm system

Halytech **microSpider2 industrial** is a complete, cost-effective solution for monitoring inputs, controlling outputs, alarm dialling and data logging. It can communicate via Ethernet, SMS, email, internet, low cost satellite and more.

The **microSpider2 industrial** is a low-power device with a built-in battery charger regulator making it very suitable for use with remote, solar powered equipment as well as in industrial installations where battery backup is required.

Featuring a built-in web server, the **microSpider2 industrial** can be configured by any computer with a web browser. No software or licence fees are required. This unique design offers unprecedented ease of use and full control over all operating parameters.

Features

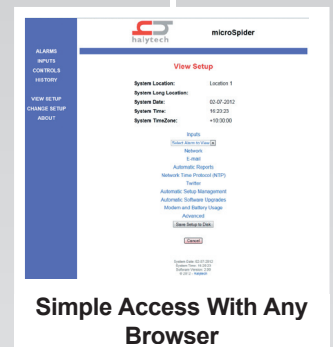
- Complete system includes:
 - DIN-rail mounted ABS enclosure
 - 4 analogue + 4 digital multi-type inputs
 - 2 digital outputs for sensor / accessory control
 - Programmable low power sensor power supply
 - 400,000 record non-volatile FLASH memory
 - Ethernet interface
 - Integrated 4G, 3G or satellite modem
 - Low profile antenna
- User configurable inputs, outputs and alarms
- Built-in battery charger regulator
- Connects to any computer with a browser and LAN port
- Download data as a CSV file compatible with Excel
- Alarms via SMS, email and Twitter
- Automatic CSV reports via email and FTP
- Ultra low power design - perfect for solar powered applications
- Remotely upgradeable software
- Enterprise level management - automatically manage thousands of microSpiders
- Optional external intelligent sensor interfaces: Modbus, SDI-12, GPS
- Optional DNP3 protocol support
- Designed and manufactured in Australia

Typical Applications

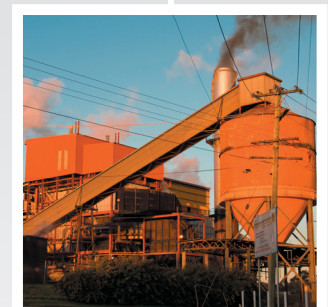
- Alarm dialling
- Data logging
- Remote monitoring



Complete Compact Unit



Simple Access With Any Browser



Remote Deployment
Built-in 3G or Iridium
satellite communications

Specifications

General

Dimensions (approx)	156(W) x 87(H) x 60(D) mm
Weight (approx)	500 g
Enclosure rating	IP - 50
Enclosure material	ABS
Mounting system	DIN Rail
Operating temperature	standard -5 to +50 deg C optional -20 to + 60 degC
Factory warranty	12 months parts and labour return to base

Power Supply

Battery or power supply requirement	12V DC, min 1A
Power consumption	Standby 65 uA Active <3mA (modem off, LAN powered externally) Active 100mA (modem on, LAN powered internally) Active 250mA (modem on, communicating)

Integrated battery charger regulator Charges an external 12V SLA battery from an external 12V solar panel or a 16 - 30V DC 2A power source

Inputs

Standard inputs	Up to 4 analogue + 4 digital + 4 system inputs
Optional inputs	Up to 20 SDI-12, Modbus, GPS
Input names	User definable
Connector	Modular, plug-in terminal block
Wire size	Up to 1.5mm ²

Analogue Inputs

Resolution	12 bits
Calibration	2 - point, 1-point or manual
Units of measure	User definable
Sampling period	User definable, 1 second minimum
Supported types	Calibrated 4 - 20 mA, common ground 0 - 2.5V, common ground 0 - 5V, common ground 0 - 10V, common ground

Digital Inputs

Input Range	0 - 12V DC Voltage or voltage-free switch contact
Type	User selectable: switch, event (rainfall), counter, utility meter, quadrature

Counter / Event Inputs

Minimum pulse width	5 ms
Maximum frequency	100 Hz
Range	0 - 999,999.999

System Inputs

Type	System temperature External battery voltage Charger voltage LAN power voltage
------	--

Outputs

Number of outputs	3
Type	1 x Switched power for sensor power / control 1 x Open collector for accessory control 1 x Low power sensor supply (3.3V or 5V)
Output names	User definable
Output control	Via browser, alarms and/or sensor warmup
Connector	Modular, plug-in terminal block
Wire size	Up to 1.5mm ²

Alarms

Number of alarms	16
Type	SMS, email and/or Twitter
Trigger	User definable input and trigger point
SMS / email text	1 per alarm, user definable
# of phone numbers	3 per alarm, user definable
# of email addresses	3 per alarm, user definable
Alarm names	User definable

Logger

Capacity	approximately 400,000 records
Storage memory	Non-volatile FLASH
Time resolution	1 second
Time synchronisation	Automatic by NTP (or GPS if fitted)
Download format	CSV file

Communication Interfaces

Ethernet	10/100 base-T, RJ-45 connector
Mobile communications	Built-in 4G, 3G or Iridium satellite
Antenna	External antenna, SMA connector
Internet connectivity	4G, 3G, LAN

Optional Assesories

Weatherproof enclosure
SDI-12/Modbus Interface
GPS Interface
Mains power supply
Solar panel
Sealed lead acid battery
Range of external Antennae

All specifications are subject to change without notice. Published 9 November 2018.

